

## CONTACT US

### **AM - Tech**

Jean Mawad Bldg. – Main Road

Zgharta - North Lebanon

W: [www.AM-Tech.info](http://www.AM-Tech.info)

E: [contact@AM-Tech.info](mailto:contact@AM-Tech.info)

T: +961 70 727 711

### **AM - Tech**

Achieve More with Less

# BUSINESS BROCHURE

**PREPARED FOR:**

**CREATED**

31/05/2017

**VALID UNTIL**

31/05/2018



# ABOUT US



Integrity, Quality, Professionalism

## OUR PROFILE

*We are a mid-size engineering and consulting office established in Lebanon since 2016, specializing in architecture, engineering, planning and development.*

Founded in 2016 AM - Tech. is the fruit of multiple years of experience of its founder in the construction industry in the European countries.

With many projects located all over Lebanon, we are staffed with qualified architects and engineers to serve our clients according to their specific needs.

Our innovative plans, designs and successful implementations are due to several factors:

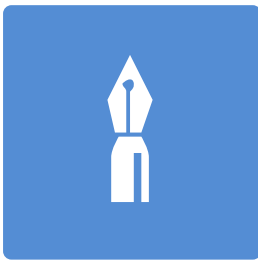
## WHAT WE DO

- Civil and Structural Engineering
  - Construction Consultant
  - Planning and development.
- A global experience in all types of small to medium-scale developments projects in architecture and engineering.
  - A dedicated staff of professionals with multi-disciplinary and multi-lingual experience.
  - Skills for developing and implementing high-tech tools to engineering and design techniques given the existing conditions.



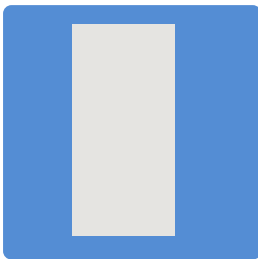
# OUR SERVICES

Our aim is to eliminate the task of dividing your project between different architectural and construction companies. We offer design and build services, we take your project from initial sketches to the final construction.



## CIVIL AND STRUCTURAL DESIGN

We have extensive experience in the civil engineering and water engineering sector. We also operate as specialists in the design of low-rise buildings and structures. Our focus is on cost-efficient designs and eliminating waste.



## CONSTRUCTION CONSULTANT

From conceptualization to blueprint and from preparation to the final installation, our team will ensure that every part of your project is perfect and compatible with your desire.



## GENERAL CONTRACTING

We are a general contractor firm that is involved in a wide array of commercial and residential projects across the country.



# OUR PHILOSOPHY



---

## QUALITY

Our aim is to continuously exceed the expectations of our client to deliver high quality projects. Our team members cross-examine all features of work before delivery.

---

## INTEGRITY

Our partnership with our clients is based on mutual trust and understanding. We do what is best for our clients given our company's' values and methods.

---

## PROFESSIONALISM

We are committed to offering the best skills while respecting the constraints of each client in terms of cost, quality and time.

We proud ourselves, for respecting the deadlines agreed upon at the beginning of each projects.

---

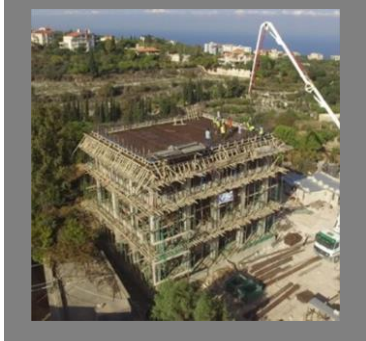
## TEAMWORK

To become leaders in our industry, we encourage teamwork to solve any construction challenges and to achieve the required results.

---

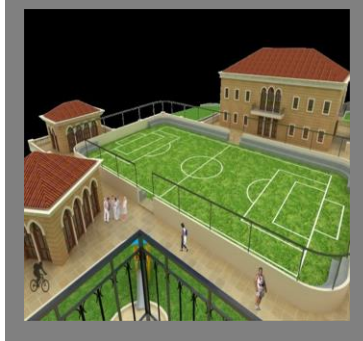


# OUR PORTFOLIO



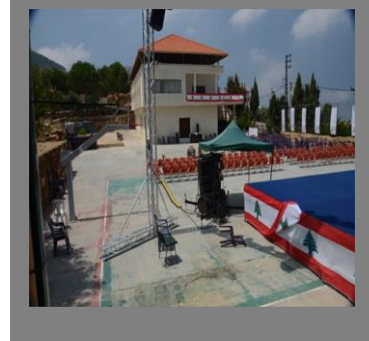
## Kalhat – Elevated Water Tank

Design and consultancy of an elevated reservoir in Qalhat, Koura, while maintaining the existing water tank beneath.



## Toula Saint Assia Village

Architecture, civil and structural engineering, and construction consultant of a community center.



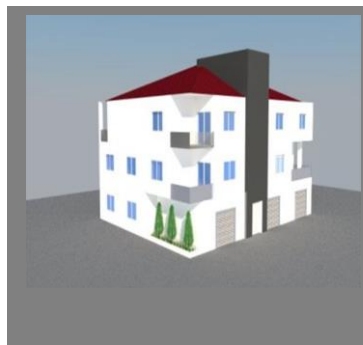
## Douma Youth Club

Civil and structural engineering, construction consultant of a youth club.



## Commercial Building

A turn key project for the account of the private sector In Koura.



## New Floor

A Turn key project for a new floor and facades renovation In Ehdén.



## Community Garden

Civil and Structural Engineering, Construction and Consultant of a community garden in Hadath.



# PROJECT TIMELINE

Time frame	1	2	3	4	5	6
Preliminary Design	■	■				
Detailed design			■			
Tender				■	■	
Execution						■

**Our aim is to eliminate the task of dividing your project between different architectural and construction companies. We offer design and build services , we take your project from initial sketches to the final construction.**



The first step of the design, includes sites visits, client inquiry, feasibility study, and sketches.



Once the preliminary design is agreed upon a detailed design is delivered to the client with all the project components.



Tender documents are to be released with the specs, BoQ, drawings, and contract conditions. A bid analysis report is provided to the clients with multiple criteria.



During the implementation, our team ensure the execution of the project with high quality standards and within strict procedures.



# PROJECT FEES

## Fees

Our fees depending on the project's value.



# TERMS & **CONDITION**

## Obligation of **CONFIDENTIALITY**

In performing any services under this proposal, the consultant may be exposed to using certain "Confidential Information" of the Company. The consultant will not use, directly or indirectly, such Confidential Information for the benefit of any person, entity, or organization other than the Company, or disclose such Confidential Information without the written authorization of the President of the Company, either during or after the term of this proposal, for as long as such information retains the characteristics of confidential information.

## Conflict of **INTEREST**

The consultant agrees not to consult or provide any services in any manner or capacity to a direct competitor of the company during the duration of this proposal unless express written authorization to do so is given by the company's president.

## Rights and **DATA**

All drawings, models, designs, formulas, methods, documents, and tangible items prepared and submitted to the company by the consultant in connection with the services rendered under this proposal shall belong exclusively to the company. The consultant agrees to give the company or its designers all the required reasonable assistance to perfect such rights.

## Responsibility **TERMINATION**

Any equipment provided by the Company to the Consultant in connection with the Consultant's services under this proposal, including, but not limited to, computers, laptops, and personal management tools, shall, immediately upon the termination of this proposal, be returned to the Company.





# OUR CLIENTS



**RENE MOAWAD FOUNDATION**



**MOAWAD SASSINE CONSTRUCTION COMPANY**



**BALADI Program**  
Under the USAID fund



**UNHCR**  
Local development projects



**UNOCHA**  
Local development projects

## SPECIAL REVIEW

### BALADI

Douma, Batroun – Youth Club

“Prompt response, design quality, and detailed assessment help us oversee problem in the contracting phase.”

### UNOCHA

Mejdelala, Zgharta – Sewerage Network

“One of best in its field. Reactivity and prompt response are one of the assets of this firm.”

# **AM - Tech**

Achieve More with Less